

Medworth Energy from Waste Combined Heat and Power Facility



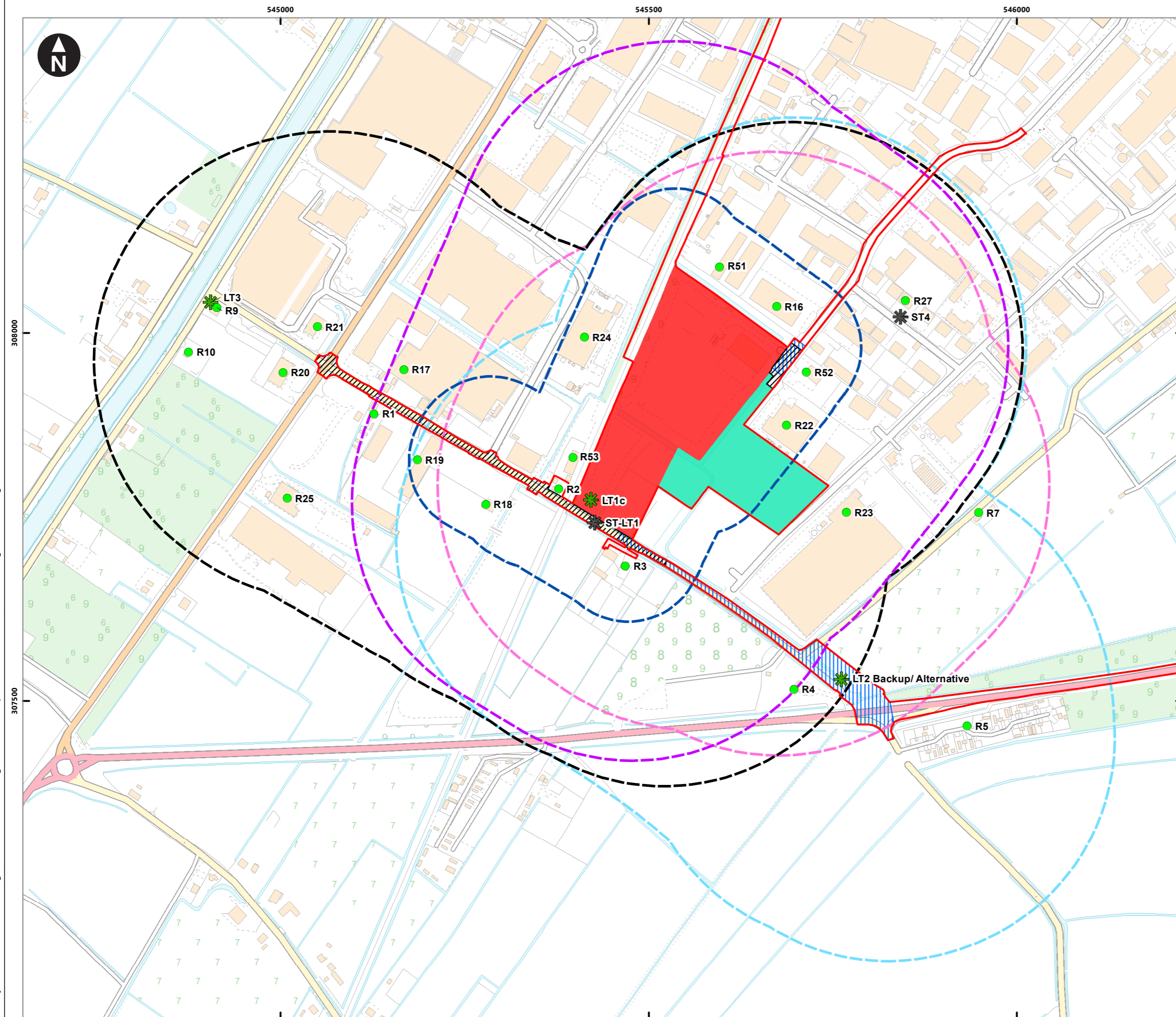
PINS ref. EN010110
Document Reference: Vol 6.3
Revision 1.0
June 2022

Environmental Statement Chapter 7 Noise and Vibration Figures

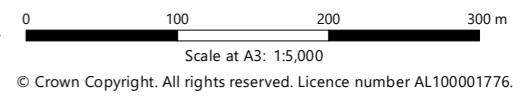
Regulation reference: The Infrastructure
Planning (Applications: Prescribed Forms
and Procedure) Regulations 2009
Regulation 5(2)(a)

**We inspire
with energy.**

H:\Projects\41310 Wisbech\Design_Technical - GI\Drawings\ArcGIS\Workspaces\41310-Shr367_v2.mxd Originator: simon.green2



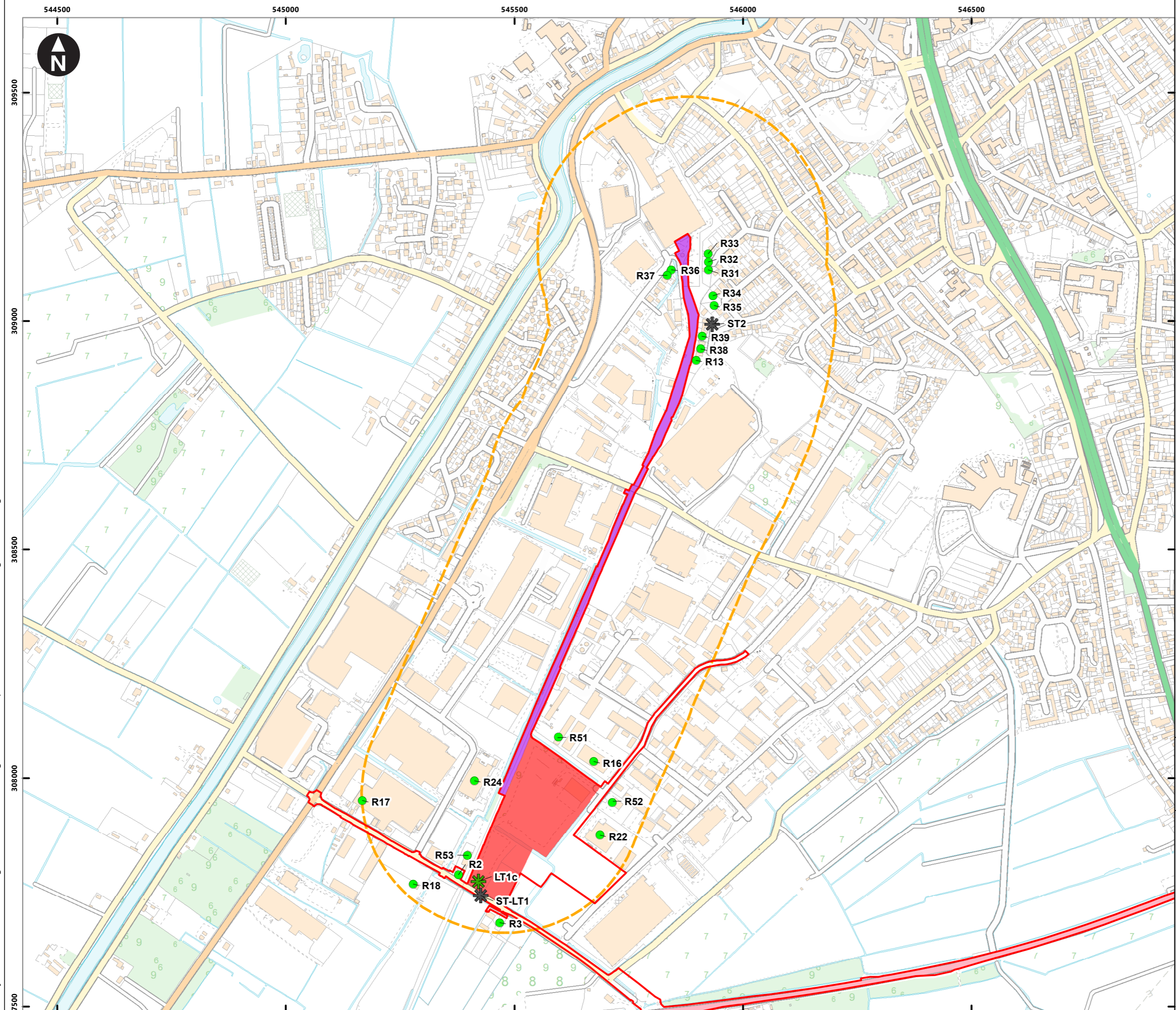
- Key
- Order limits
 - EfW CHP Facility Site
 - Temporary Construction Compound
 - Access Improvements
 - Water Connections
 - Construction vibration Study Area - EfW CHP Facility
 - Construction noise Study Area - EfW CHP Facility
 - Construction noise Study Area - Temporary Construction Compound
 - Construction noise Study Area - Access Improvements
 - Construction noise Study Area - Water Connections
 - Noise Sensitive Receptors
 - ✱ Long term monitoring location
 - ✱ Short term monitoring location



Medworth CHP Limited
 Medworth Energy from Waste Combined Heat and Power Facility DCO
 Environmental Statement
 Chapter 7 - Noise and Vibration

Figure 7.1
Construction noise & vibration Study Area - EfW CHP Facility, Access Improvements and Water Connections

H:\Projects\41310 Wisbech\Design_Technical - GI\Drawings\ArcGIS\Workspaces\41310-Shr368.mxd Originator: simon.green2



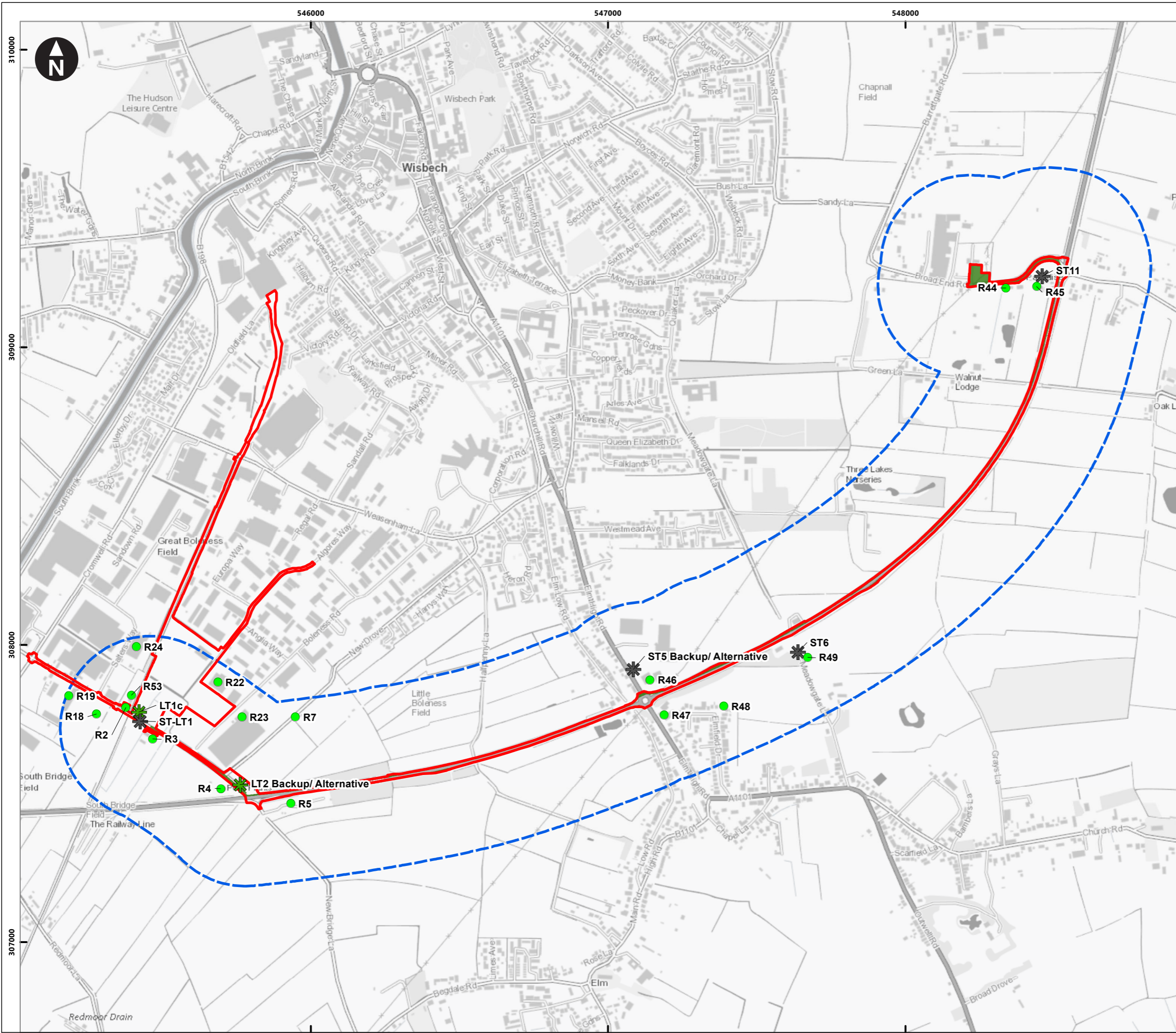
- Key
- Order limits
 - EfW CHP Facility Site
 - CHP Connection
 - Construction noise Study Area - CHP Connection
 - Noise Sensitive Receptors
 - ✱ Long term monitoring location
 - ✱ Short term monitoring location

0 100 200 300 400 m
 Scale at A3: 1:8,000
 © Crown Copyright. All rights reserved. Licence number AL100001776.



Medworth CHP Limited
 Medworth Energy from Waste Combined Heat and Power Facility DCO
 Environmental Statement
 Chapter 7 - Noise and Vibration

Figure 7.2
Construction noise Study Area - CHP Connection



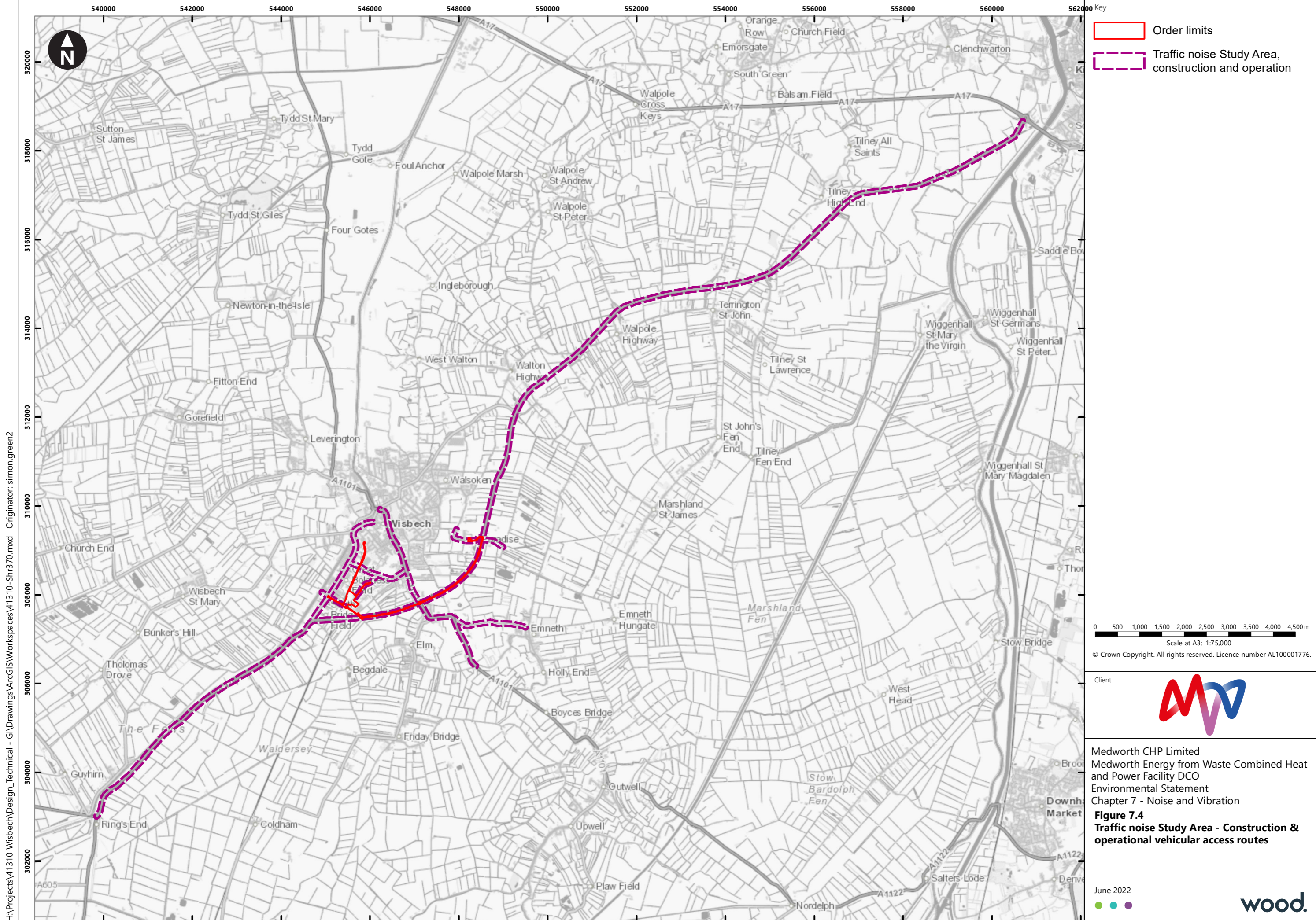
- Key
- Order limits
 - Grid Connection
 - Construction and operational noise Study Area, Grid Connection
 - Noise Sensitive Receptors
 - ✱ Long term monitoring location
 - ✱ Short term monitoring location

0 100 200 300 400 500 600 700 m
 Scale at A3: 1:12,500
 © Crown Copyright. All rights reserved. Licence number AL100001776.



Medwath CHP Limited
 Medwath Energy from Waste Combined Heat and Power Facility DCO
 Environmental Statement
 Chapter 7 - Noise and Vibration

Figure 7.3
Construction and operational noise Study Area - Grid Connection



H:\Projects\41310 Wisbech\Design_Technical - GIS\Drawings\ArcGIS\Workspaces\41310-Shr370.mxd Originator: simon.green2

Key
 Order limits
 Traffic noise Study Area, construction and operation

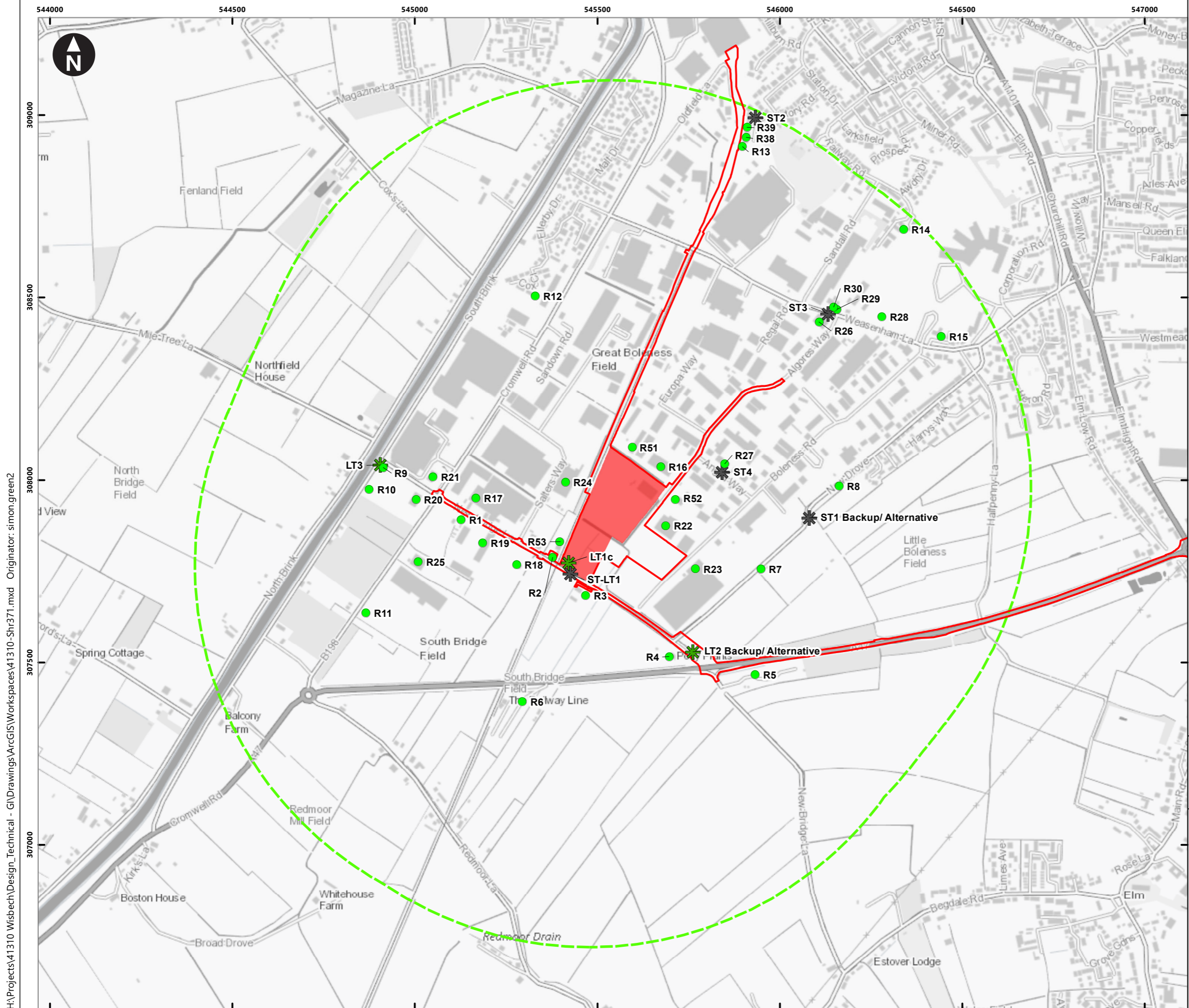
0 500 1,000 1,500 2,000 2,500 3,000 3,500 4,000 4,500m
 Scale at A3: 1:75,000
 © Crown Copyright. All rights reserved. Licence number AL100001776.



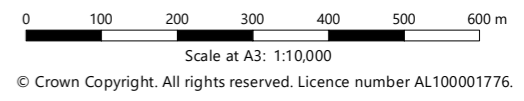
Medworth CHP Limited
 Medworth Energy from Waste Combined Heat and Power Facility DCO
 Environmental Statement
 Chapter 7 - Noise and Vibration

Figure 7.4
Traffic noise Study Area - Construction & operational vehicular access routes

June 2022
 wood.



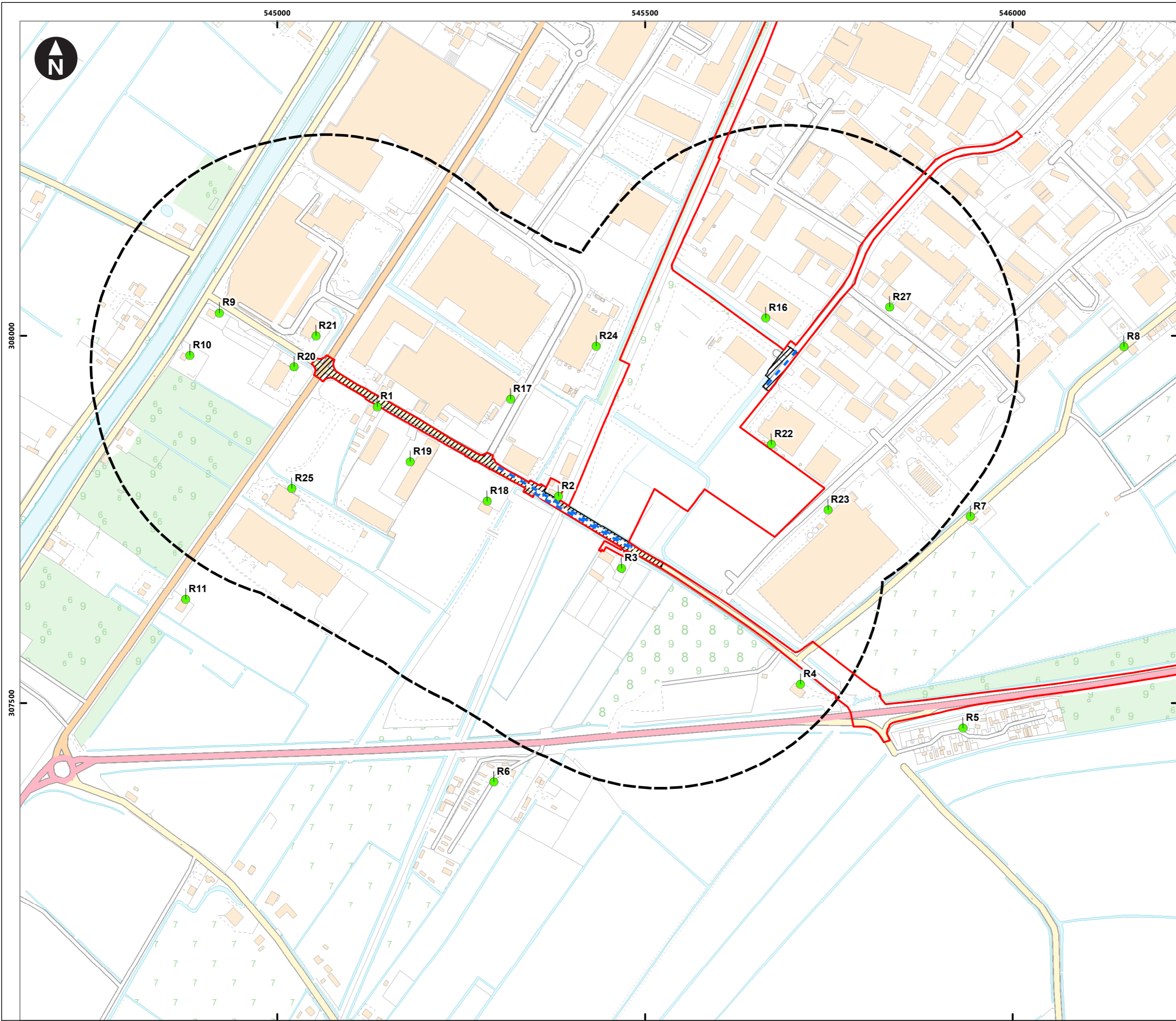
- Key
- Order limits
 - EfW CHP Facility Site
 - Operational noise Study Area - EfW CHP Facility
 - Noise Sensitive Receptors
 - ✱ Long term monitoring location
 - ✱ Short term monitoring location



Medworth CHP Limited
 Medworth Energy from Waste Combined Heat and Power Facility DCO
 Environmental Statement
 Chapter 7 - Noise and Vibration

Figure 7.5
Operational noise Study Area - EfW CHP Facility

H:\Projects\41310 Wisbech\Design_Technical - G:\Drawings\ArcGIS\Workspaces\41310-Shr371.mxd Originator: simon.green2



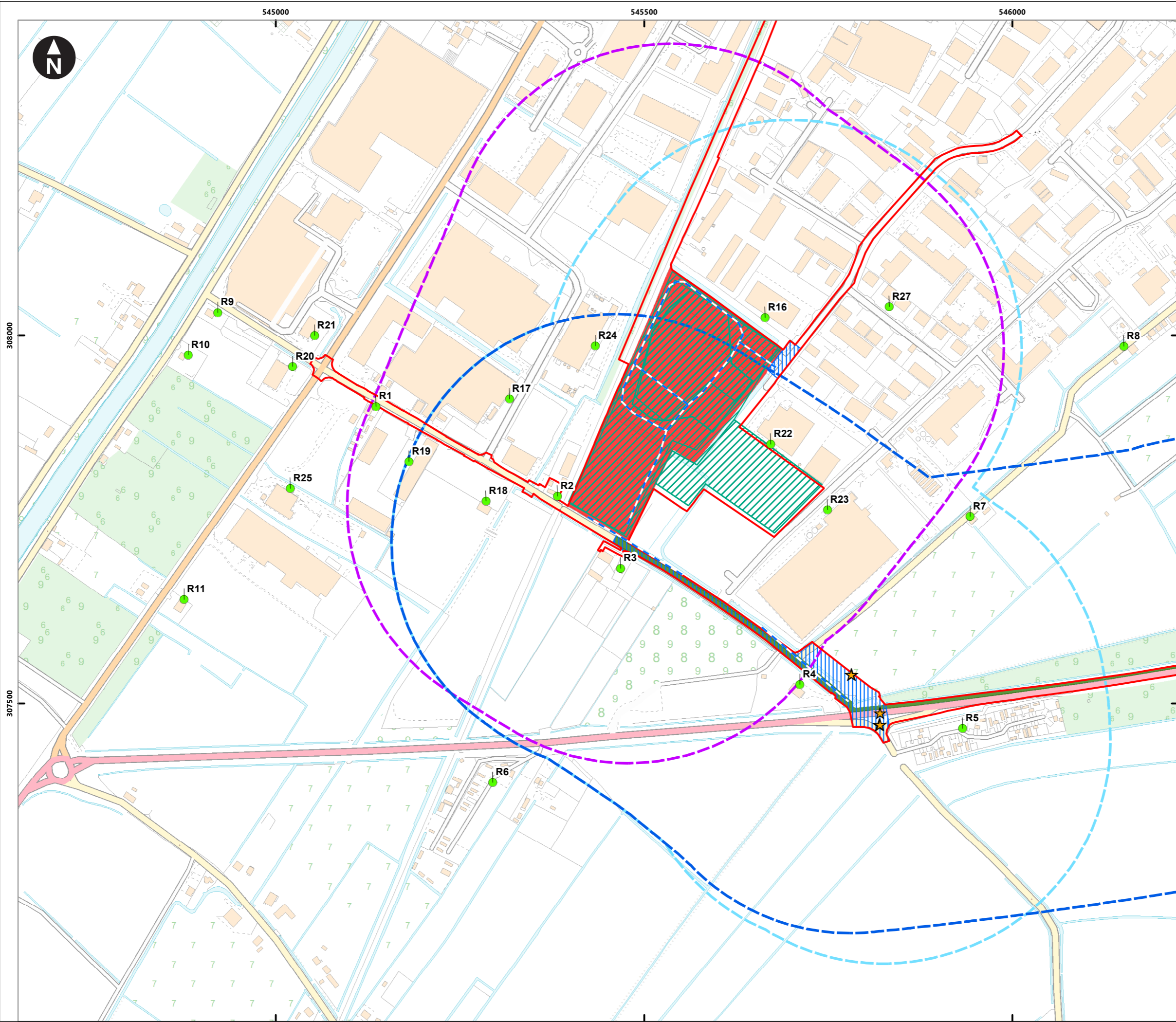
- Key
- Order limits
 - Access Improvements
 - Construction noise Study Area - Access Improvements
 - Line source
 - Noise Sensitive Receptors

0 100 200 300 m
Scale at A3: 1:5,000
© Crown Copyright. All rights reserved. Licence number AL100001776.



Medworth CHP Limited
Medworth Energy from Waste Combined Heat and Power Facility DCO
Environmental Statement
Chapter 7 - Noise and Vibration

Figure 7.6
Noise model input: construction scenarios
(Access Improvements)



Key

- Order limits
- EfW CHP Facility Site
- Grid Connection
- Water Connections
- Construction noise Study Area - EfW CHP Facility
- Construction noise Study Area - Water Connections
- Construction and operational noise Study Area, Grid Connection
- Point source
- Line source
- Area source
- Noise Sensitive Receptors

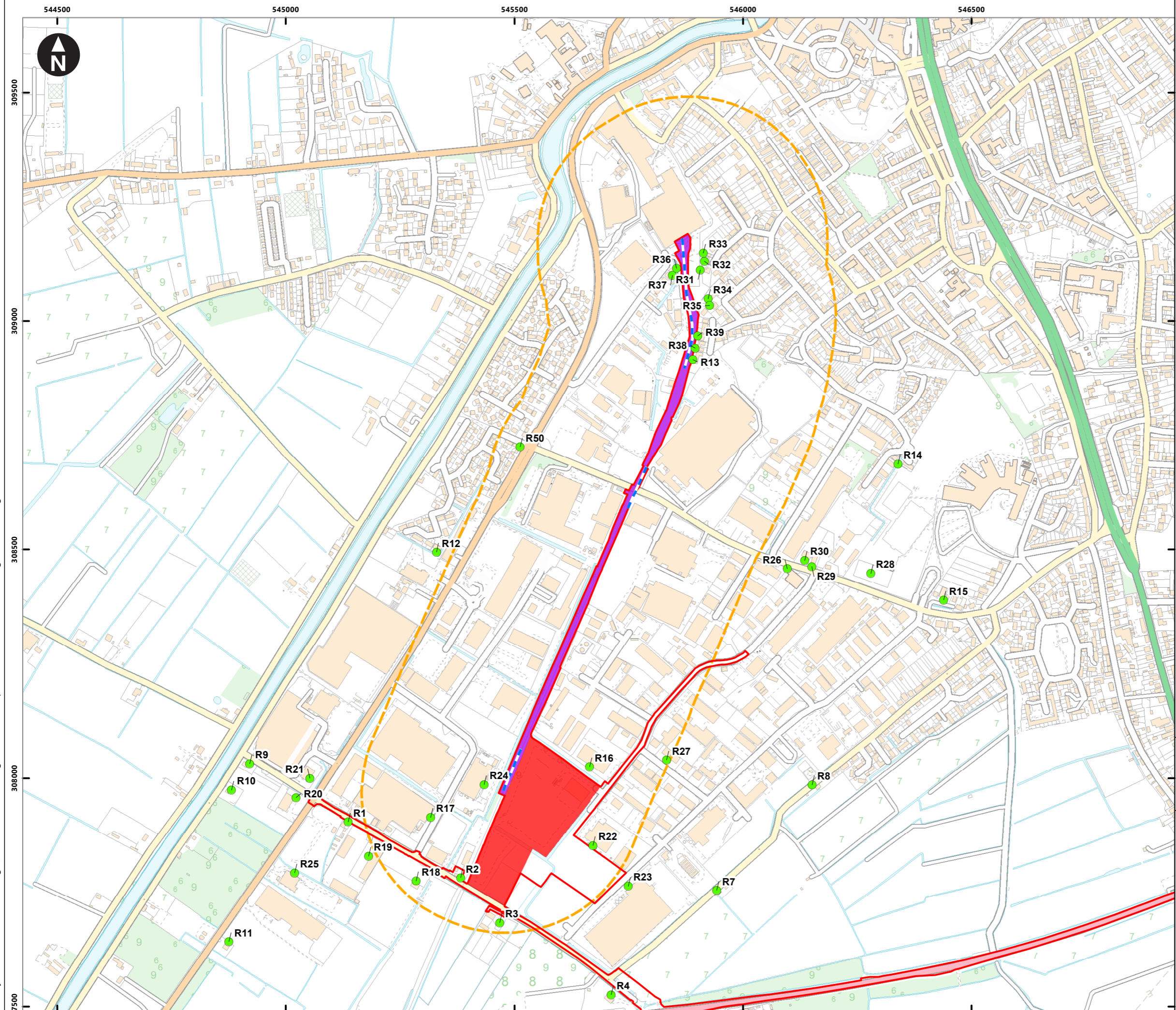
0 100 200 300 m
Scale at A3: 1:5,000
© Crown Copyright. All rights reserved. Licence number AL100001776.



Medworth CHP Limited
Medworth Energy from Waste Combined Heat and Power Facility DCO
Environmental Statement
Chapter 7 - Noise and Vibration

Figure 7.7
Noise model input: construction scenarios (EfW CHP Facility Site, including Grid Connection and Water Connection along New Bridge Lane)

H:\Projects\41310_Wisbech\Design_Technical - GI\Drawings\ArcGIS\Workspaces\41310-Shr466.mxd Originator: simon.green2



- Key
- Order limits
 - EfW CHP Facility Site
 - CHP Connection
 - Construction noise Study Area - CHP Connection
 - Line source
 - Noise Sensitive Receptors

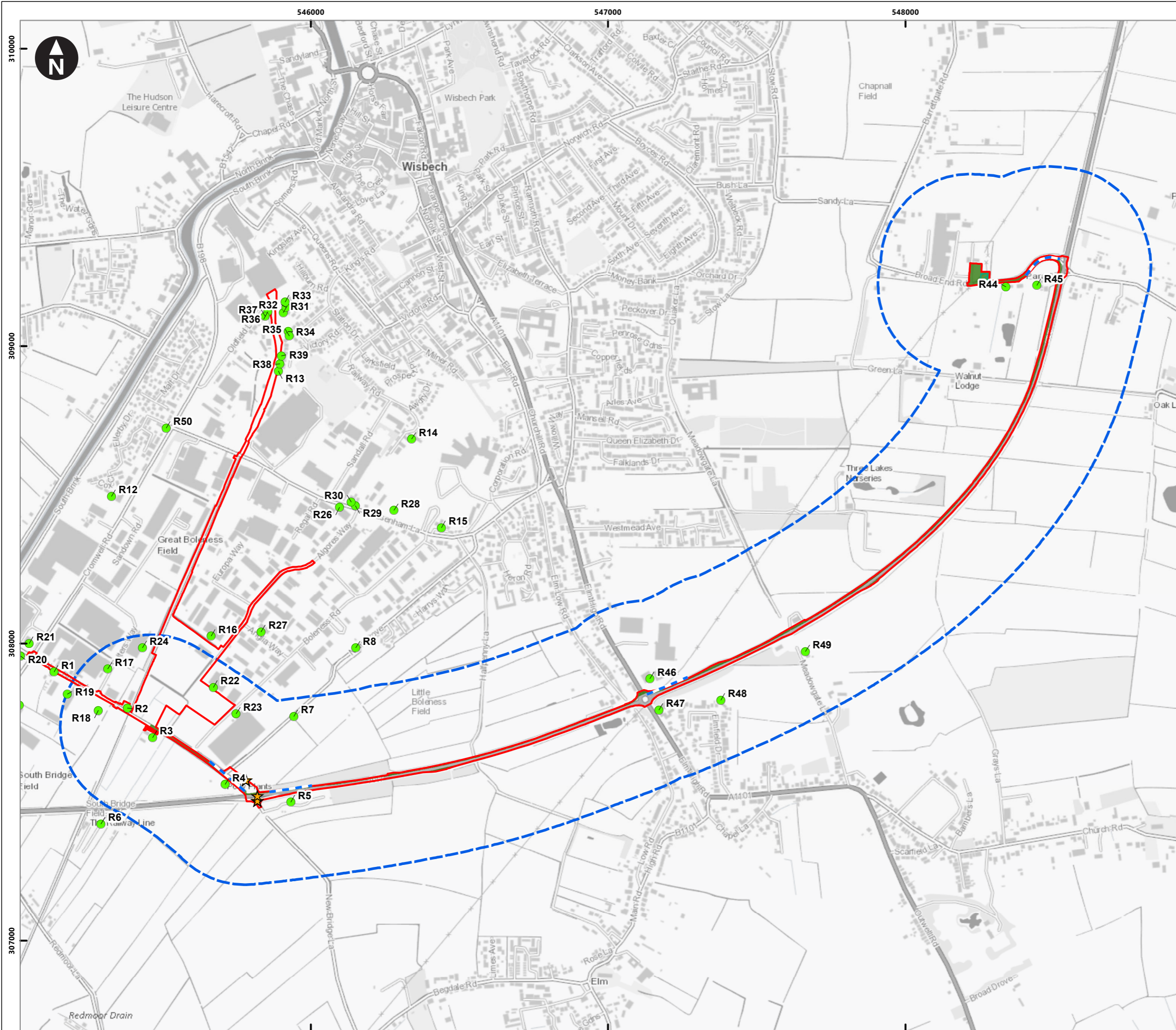
0 100 200 300 400 m
 Scale at A3: 1:8,000
 © Crown Copyright. All rights reserved. Licence number AL100001776.



Medworth CHP Limited
 Medworth Energy from Waste Combined Heat and Power Facility DCO
 Environmental Statement
 Chapter 7 - Noise and Vibration

Figure 7.8
Noise model input: construction scenarios (CHP Connection)

June 2022



- Key
- Order limits
 - Grid Connection
 - Construction and operational noise Study Area, Grid Connection
 - ★ Point source
 - Line source
 - Area source
 - Noise Sensitive Receptors

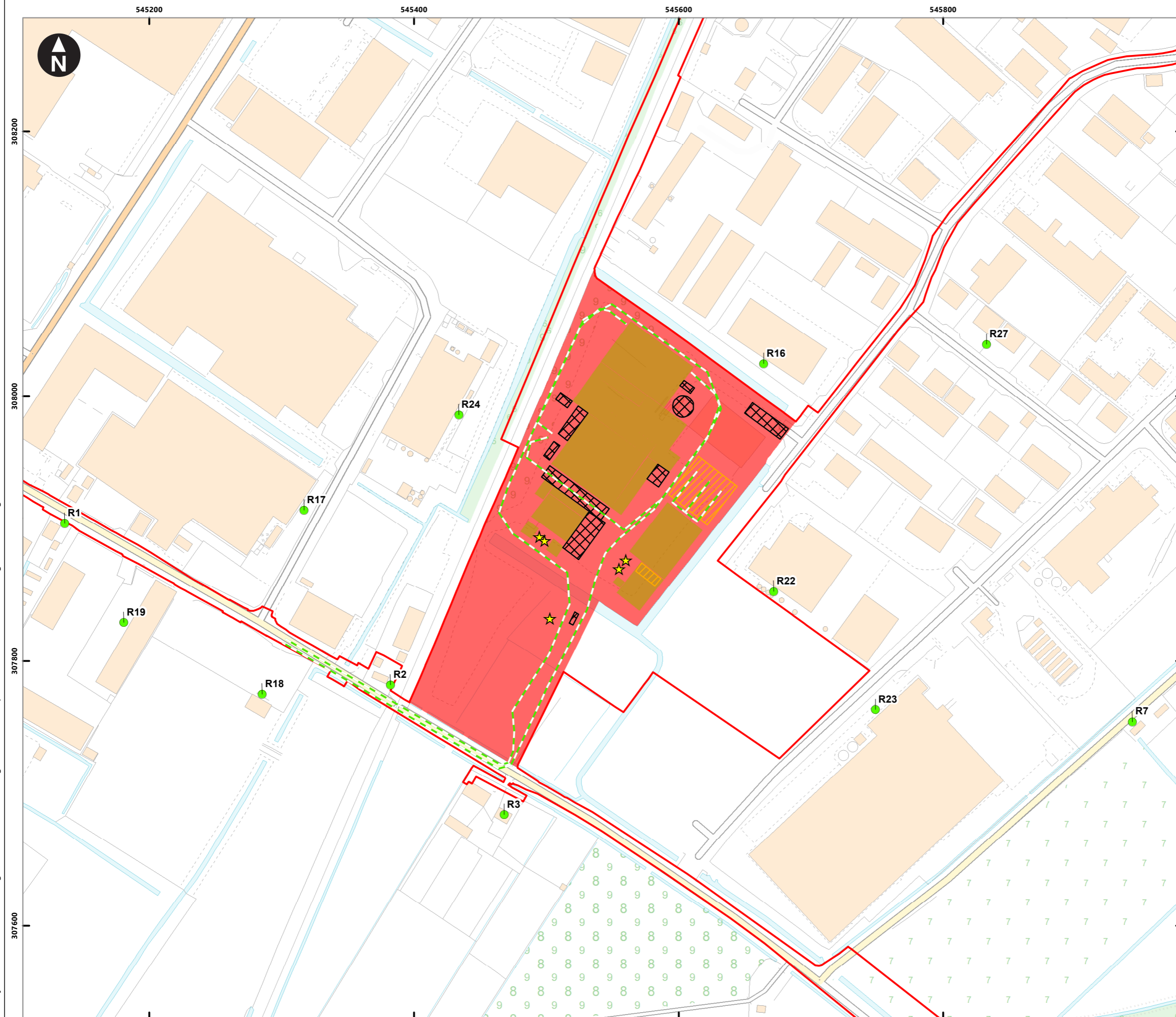
0 100 200 300 400 500 600 700 m
 Scale at A3: 1:12,500
 © Crown Copyright. All rights reserved. Licence number AL100001776.



Medworth CHP Limited
 Medworth Energy from Waste Combined Heat and Power Facility DCO
 Environmental Statement
 Chapter 7 - Noise and Vibration

Figure 7.9
Noise model input: construction scenarios
(Grid Connection cable route)

H:\Projects\41310_Wisbech\Design_Technical - GI\Drawings\ArcGIS\Workspaces\41310-Shr468.mxd Originator: simon.green2



- Key
- Order limits
 - EfW CHP Facility Site
 - ★ Point source
 - Line source
 - Area source
 - Non-source buildings
 - Source buildings
 - Noise Sensitive Receptors

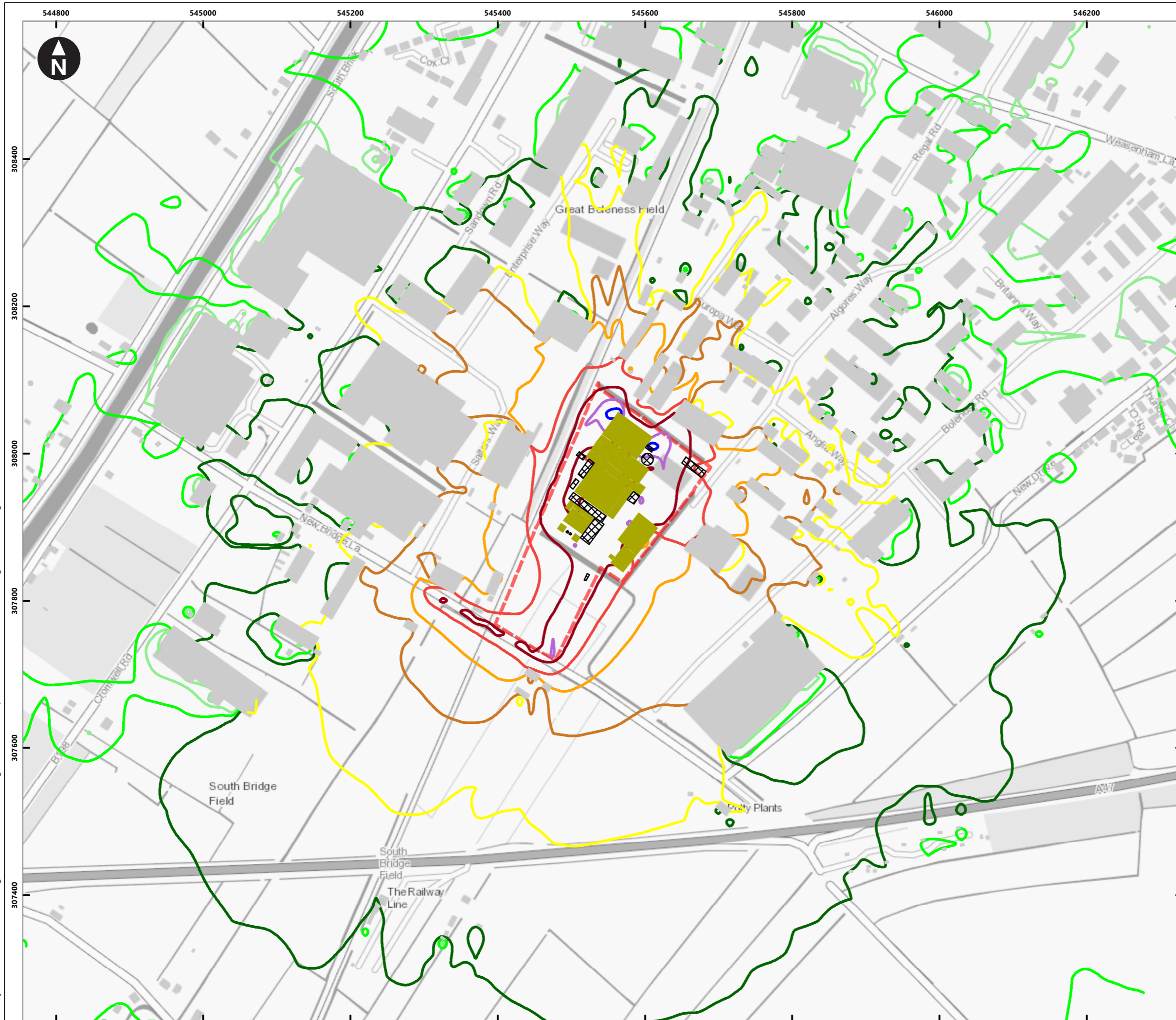
0 20 40 60 80 100 120 140 160 m
 Scale at A3: 1:2,782
 © Crown Copyright. All rights reserved. Licence number AL100001776.



Medworth CHP Limited
 Medworth Energy from Waste Combined Heat and Power Facility DCO
 Environmental Statement
 Chapter 7 - Noise and Vibration
Figure 7.10
Noise model input: EfW CHP Facility, operational noise

June 2022

H:\Projects\41310_Wisbech\Design_Technical - GI\Drawings\ArcGIS\Workspaces\41310-Shr469.mxd Originator: simon.green2



Key

- EfW CHP Facility Site
- Buildings
- Non-source buildings
- Source buildings

Noise Zone dB

- Below 35
- 35 - 40
- 40 - 45
- 45 - 50
- 50 - 55
- 55 - 60
- 60 - 65
- 65 - 70
- 70 - 75
- 75 - 80

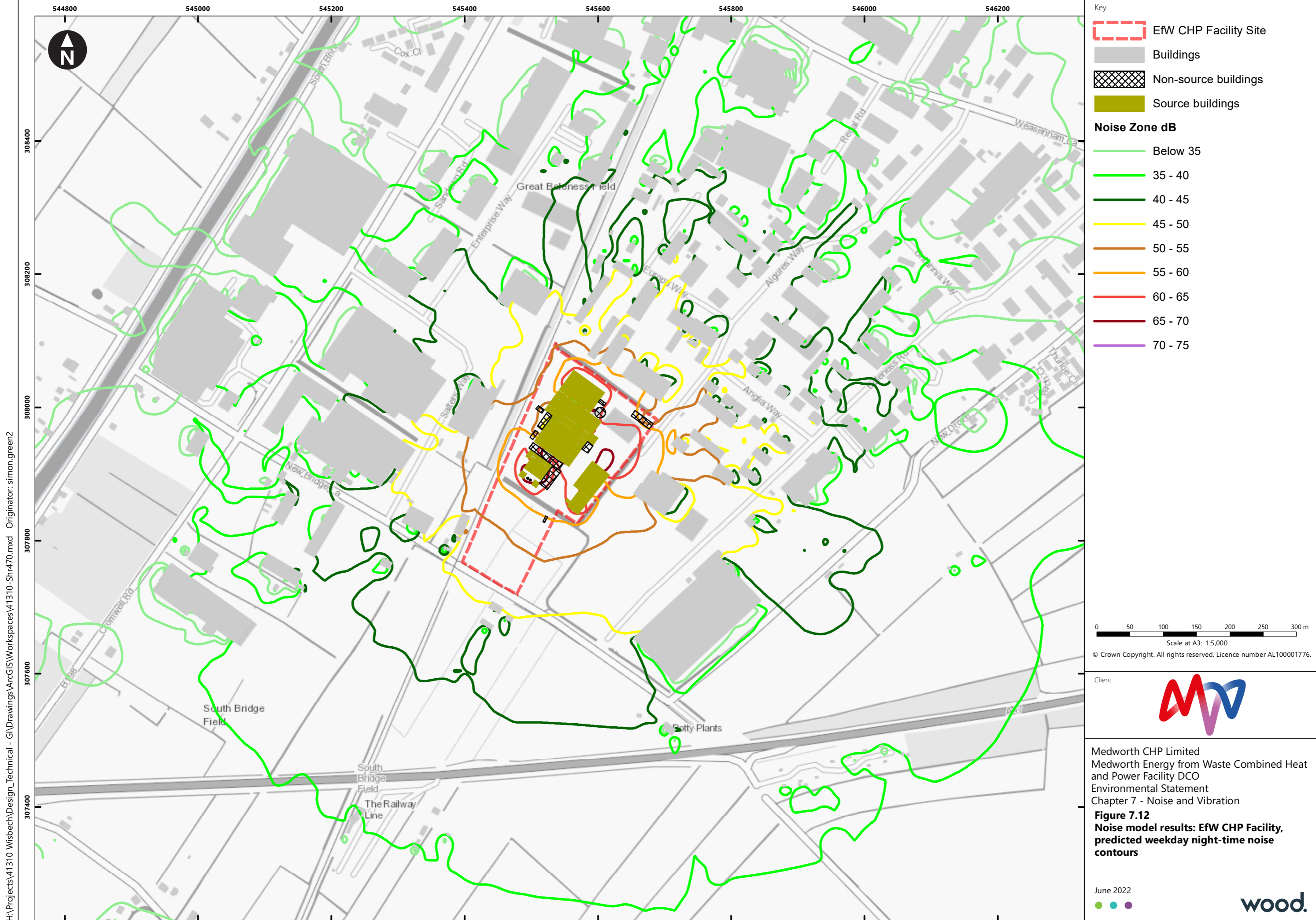
0 50 100 150 200 250 300 m
 Scale at A3: 1:5,000
 © Crown Copyright. All rights reserved. Licence number AL100001776.



Medworth CHP Limited
 Medworth Energy from Waste Combined Heat and Power Facility DCO
 Environmental Statement
 Chapter 7 - Noise and Vibration

Figure 7.11
Noise model results: EfW CHP Facility, predicted weekday daytime noise contours

June 2022



Key

- EFW CHP Facility Site
- Buildings
- Non-source buildings
- Source buildings

Noise Zone dB

- Below 35
- 35 - 40
- 40 - 45
- 45 - 50
- 50 - 55
- 55 - 60
- 60 - 65
- 65 - 70
- 70 - 75

0 50 100 150 200 250 300 m
 Scale at A3: 1:5,000
 © Crown Copyright. All rights reserved. Licence number AL100001776.

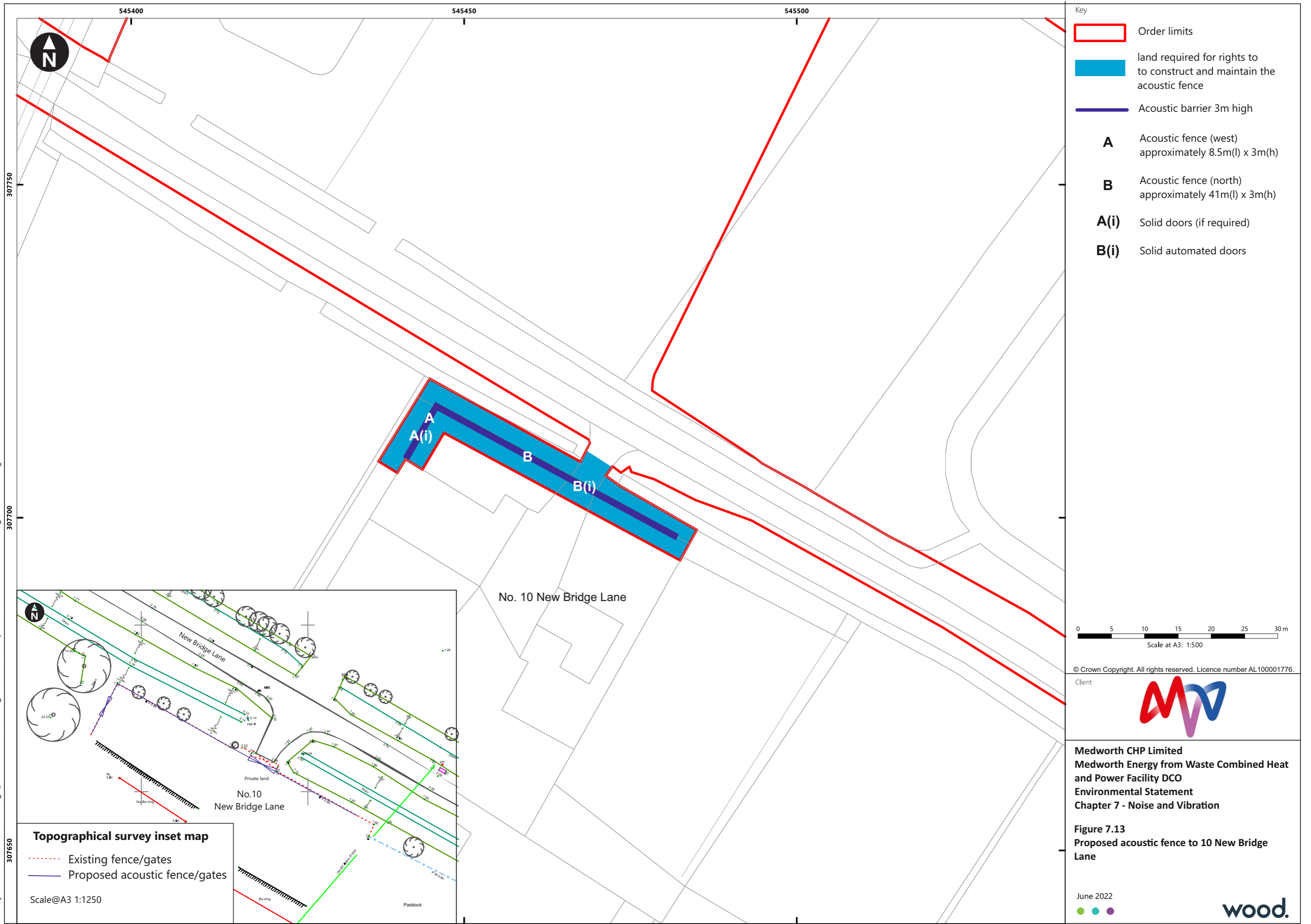


Medworth CHP Limited
 Medworth Energy from Waste Combined Heat and Power Facility DCO
 Environmental Statement
 Chapter 7 - Noise and Vibration

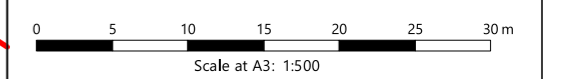
Figure 7.12
Noise model results: EFW CHP Facility, predicted weekday night-time noise contours

H:\Projects\41310_Wisbech\Design_Technical - GI\Drawings\ArcGIS\Workspaces\41310-Shr470.mxd Originator: simon.green2

H:\Projects\41310 Wisbech\Design_Technical - G:\Drawings\ArcGIS\Workspaces\41310-Shr471.mxd Originator: simon.green2



- Key
- Order limits
 - land required for rights to construct and maintain the acoustic fence
 - Acoustic barrier 3m high
 - A** Acoustic fence (west) approximately 8.5m(l) x 3m(h)
 - B** Acoustic fence (north) approximately 41m(l) x 3m(h)
 - A(i)** Solid doors (if required)
 - B(i)** Solid automated doors



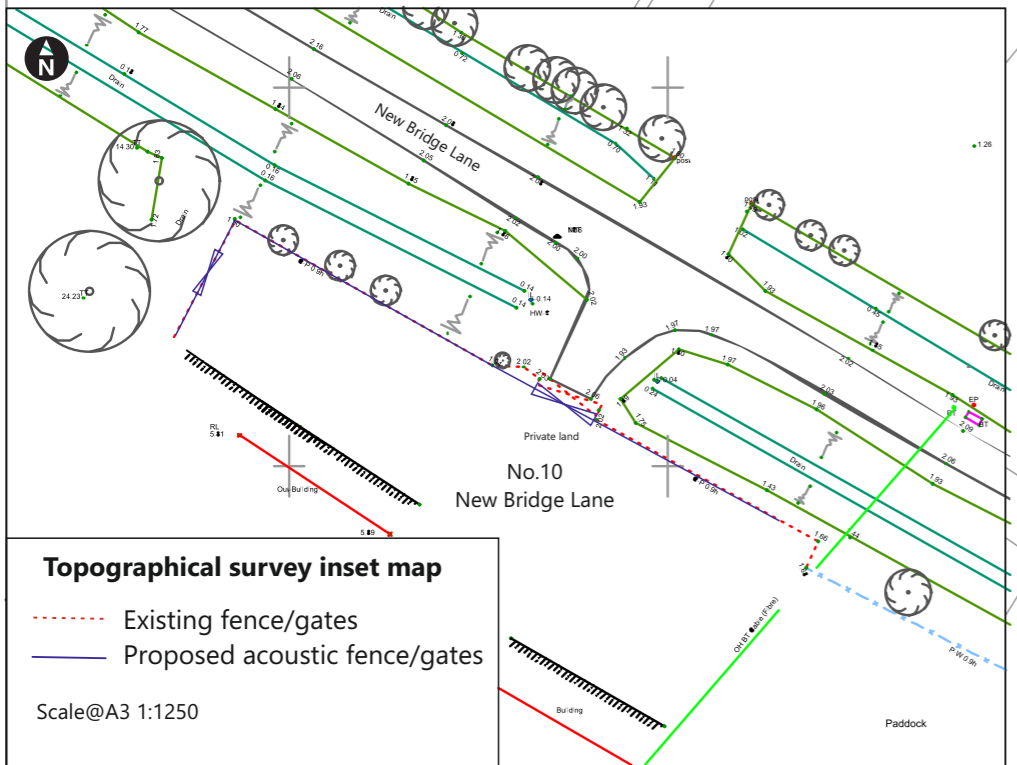
© Crown Copyright. All rights reserved. Licence number AL100001776.



Medworth CHP Limited
Medworth Energy from Waste Combined Heat and Power Facility DCO
Environmental Statement
Chapter 7 - Noise and Vibration

Figure 7.13
Proposed acoustic fence to 10 New Bridge Lane

June 2022
● ● ●



Topographical survey inset map

- Existing fence/gates
- Proposed acoustic fence/gates

Scale@A3 1:1250

This page is intentionally blank

